

#P3B

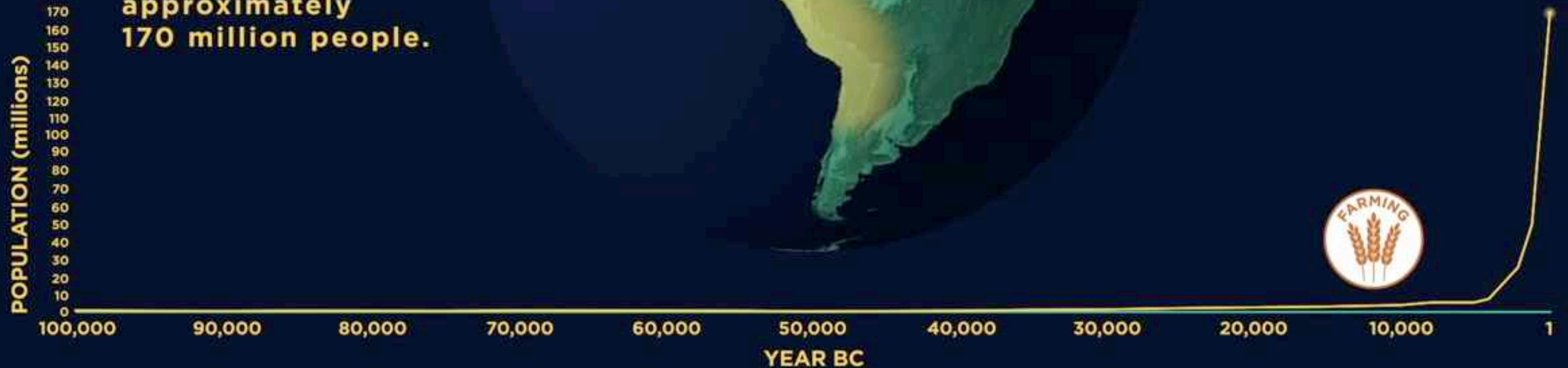
@Planet3Billion
@PLANETtucker

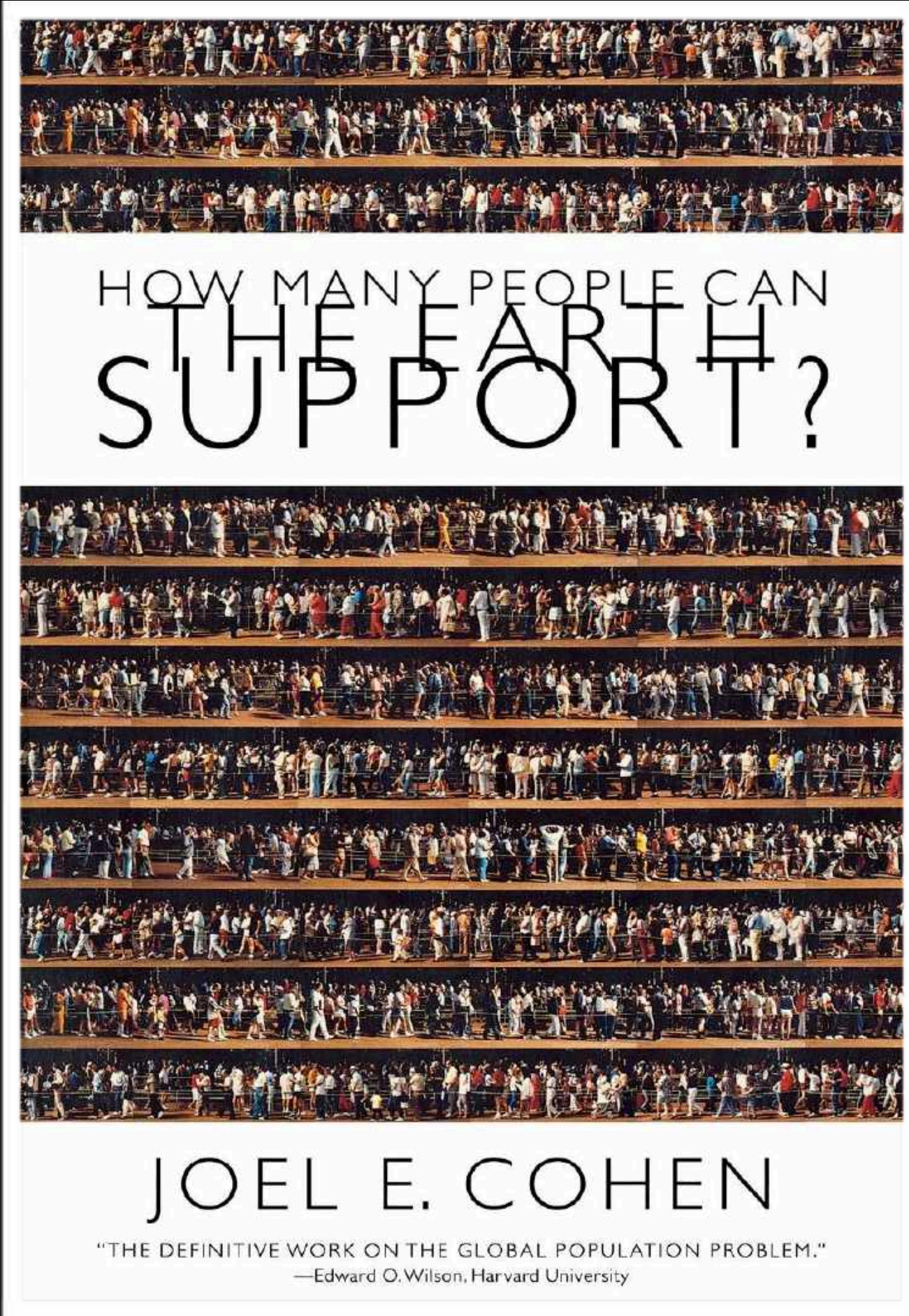
HUMAN POPULATION

Our population remained low—probably less than 1 million people.

With the advent of farming, growth picked up.

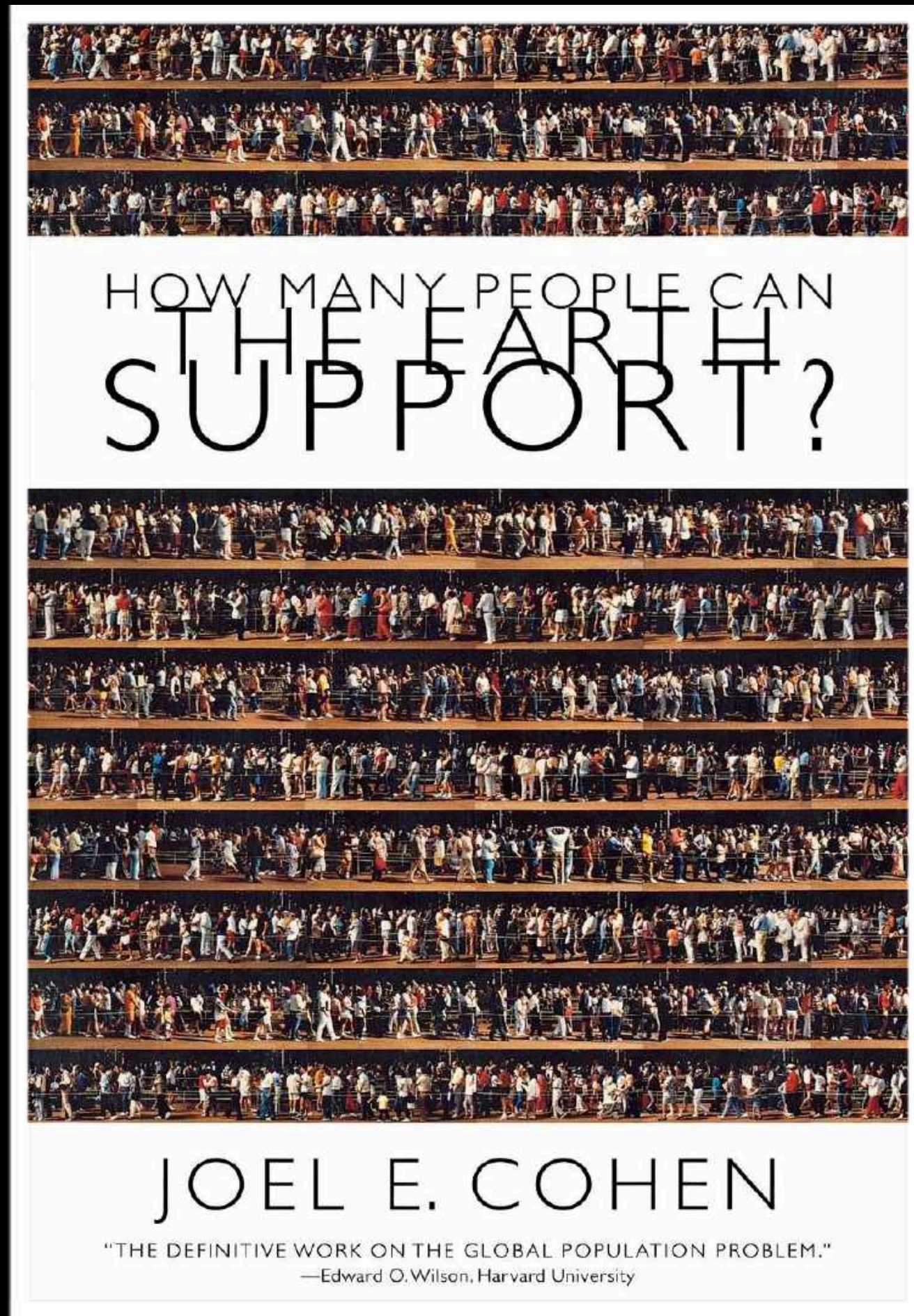
By AD 1, world population reached approximately 170 million people.





HOW MANY PEOPLE
DO YOU THINK
THE EARTH CAN
SUPPORT?

#P3B



WHAT ARE THE IMPLICATIONS OF EXCEEDING THE CARRYING CAPACITY OF OUR PLANET?

#P3B

United States
Army War College

VICE

Climate Change

U.S. Military Could Collapse Within 20 Years Due to Climate Change, Report Commissioned By Pentagon Says

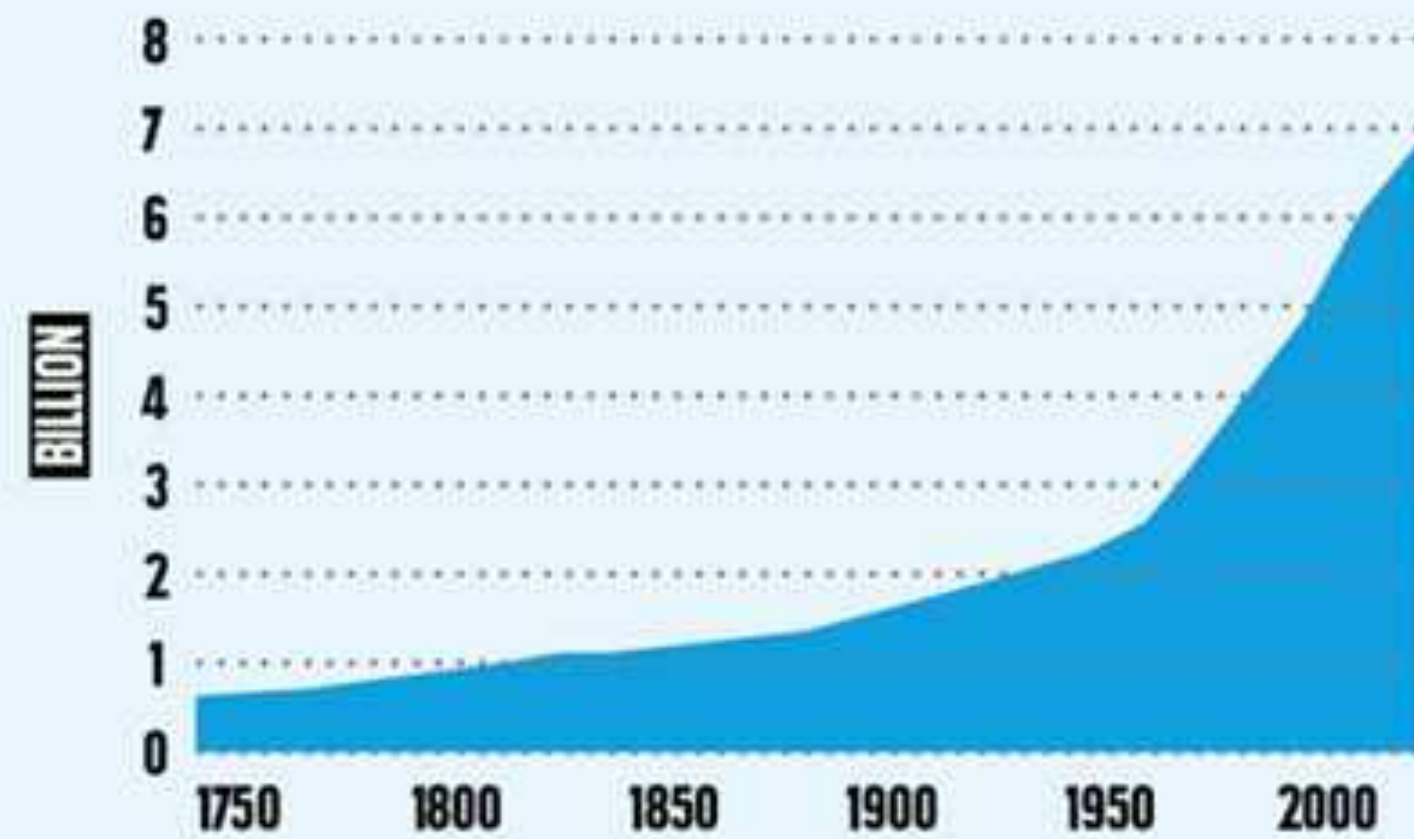
The report says a combination of global starvation, war, disease, drought, and a fragile power grid could have cascading, devastating effects.

#P3B

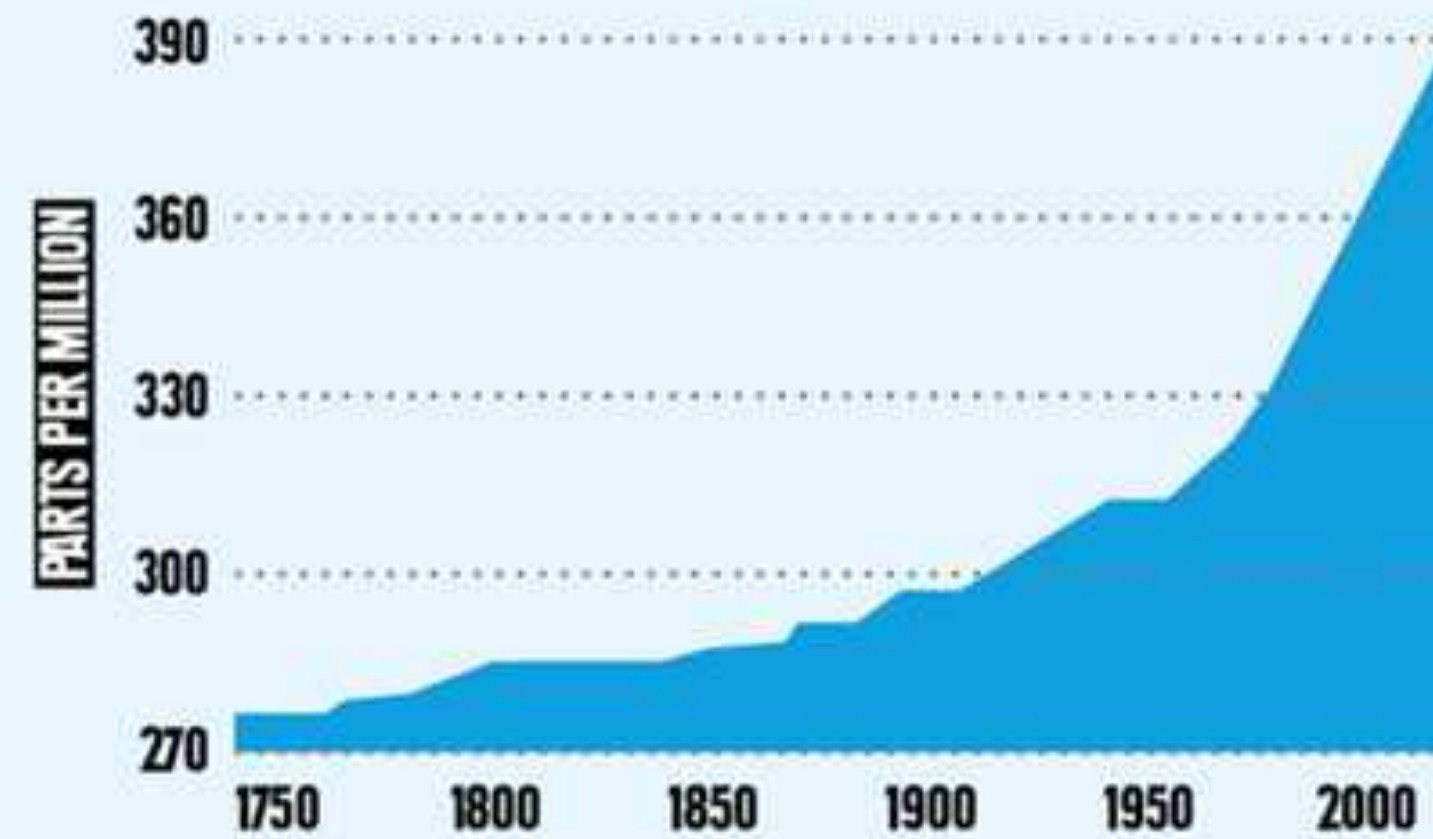
CARBON, CLIMATE CHANGE & POPULATION

POPULATION AND CO₂ EMISSIONS, 1750-2015

WORLD POPULATION

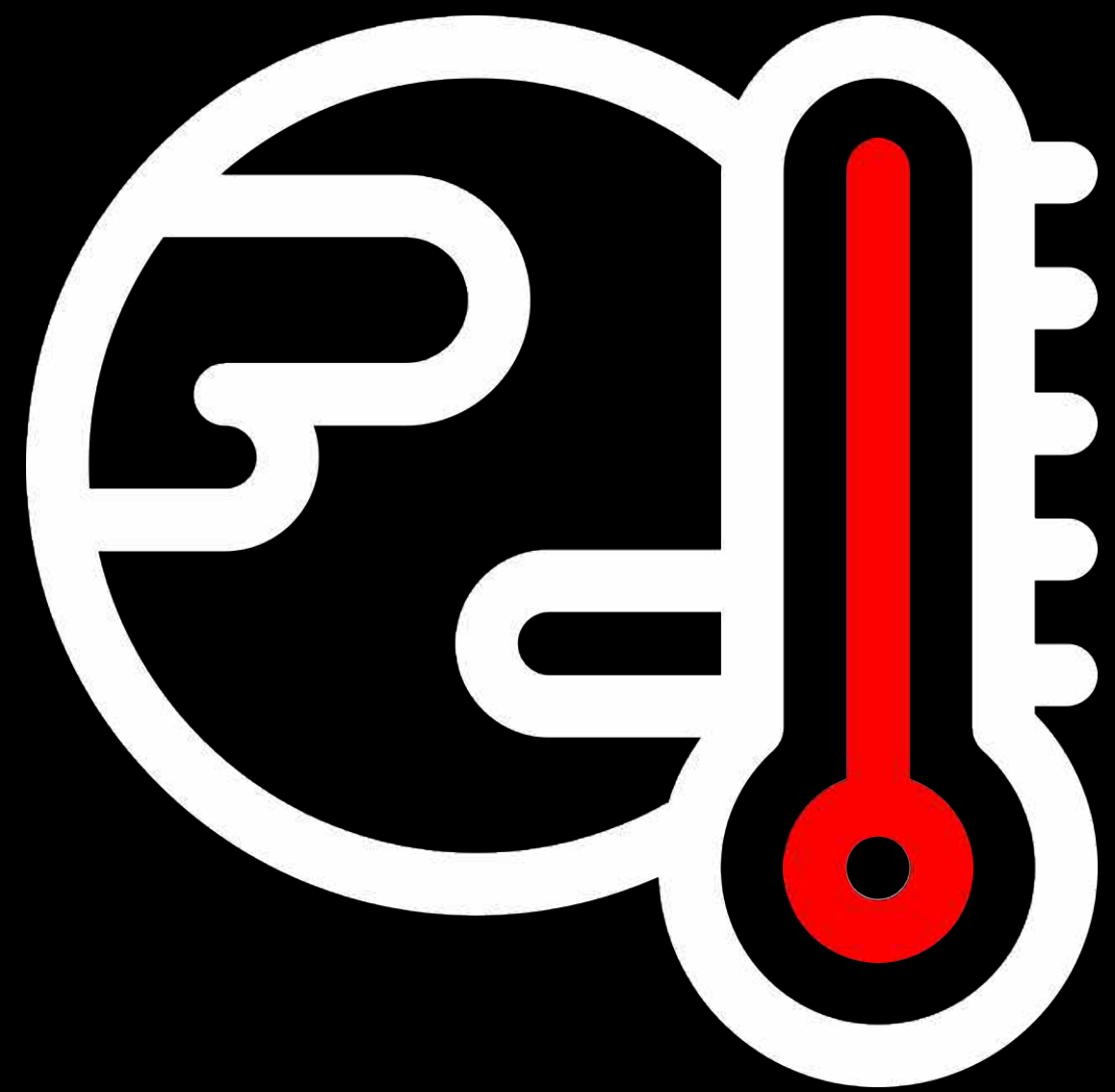


CARBON DIOXIDE (CO₂)



#P3B

THE HUMAN FOOTPRINT



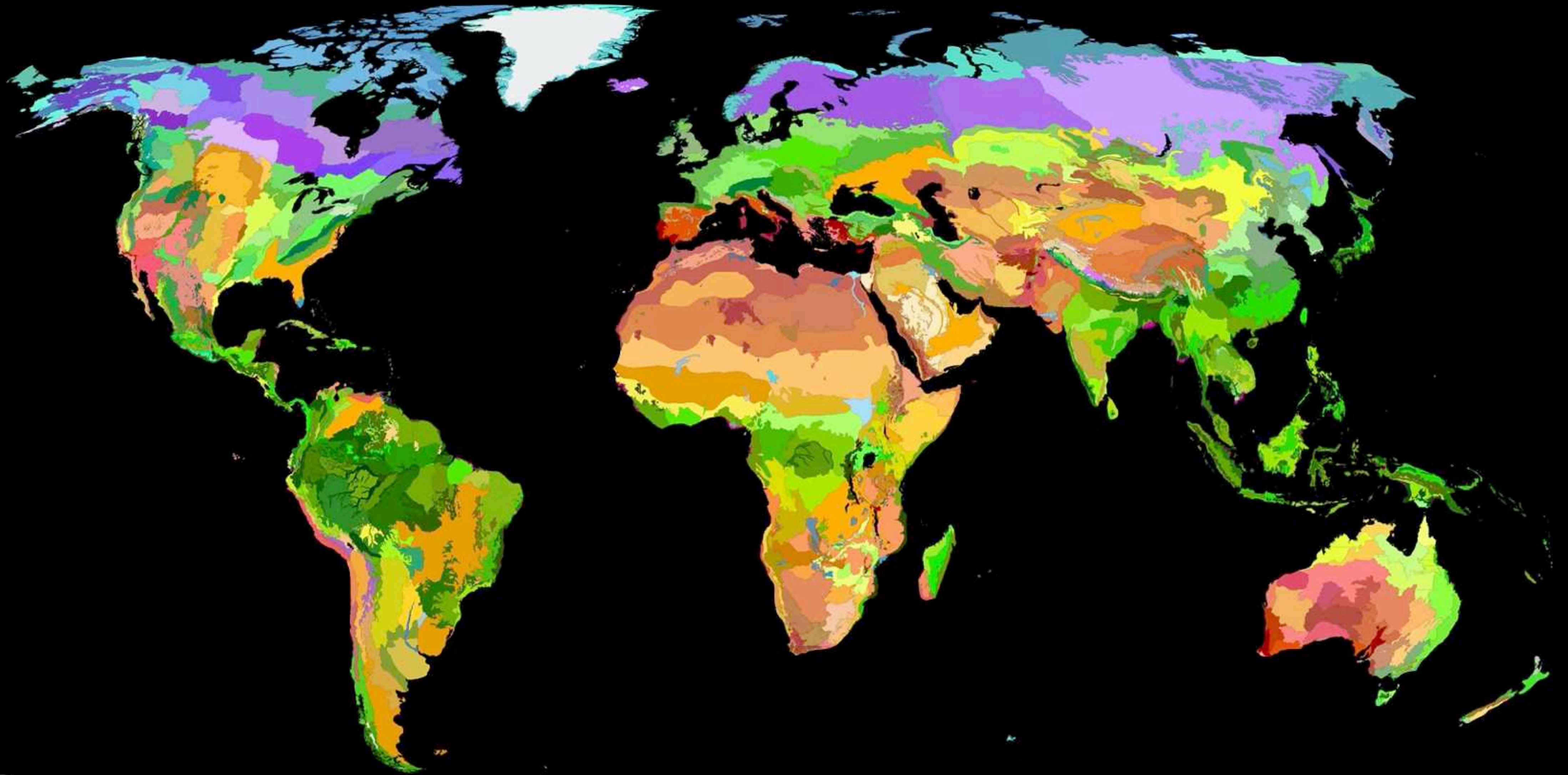
CLIMATE CHANGE

Twice as bad as you think it is,
yet only 1/10th of the problem

#P3B

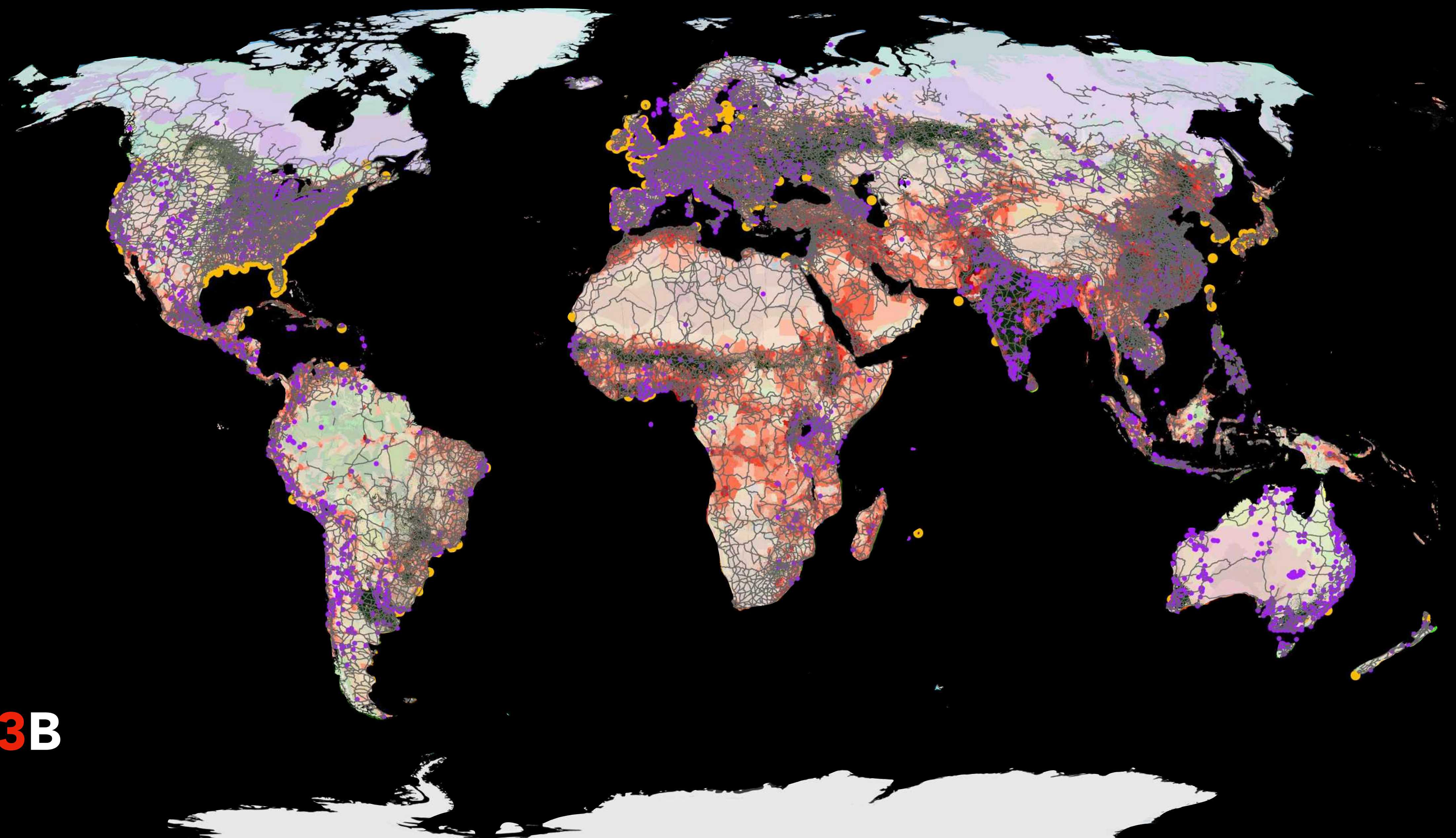


ECOREGIONS



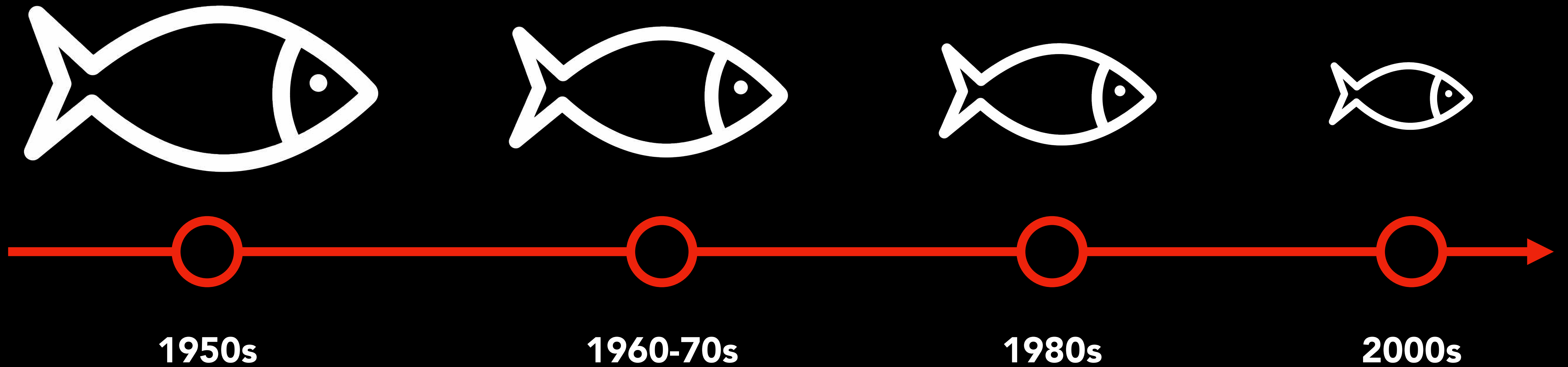
#P3B

THE HUMAN FOOTPRINT



#P3B

SHIFTING BASELINE SYNDROME



#P3B

HOW MUCH CAN YOU CATCH FROM A DAY OF FISHING?

Decades of photographs from Key West, Florida, document the declining size and abundance of fish. On a typical day in the 1950s, a sport fisher could expect to snare several groupers longer than he or she was tall. Fifty years later, the biggest "prize" fish was a little over a foot long.

Photographs courtesy of Monroe Public Library

1950s:

Giant groupers dominate the catch. Smaller specimens are not worth keeping.



1960s & 1970s:

The biggest fish are no longer bigger than the fishermen.



1980s:

Giant grouper are gone. Snappers and smaller fish abound.



2000s:

The average catch is usually no longer than a foot.



#P3B

THE HUMAN FOOTPRINT

Industrialization of the
Global Landscape

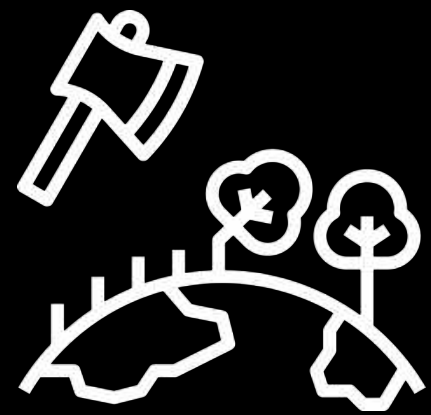
The Geography of
Human Waste



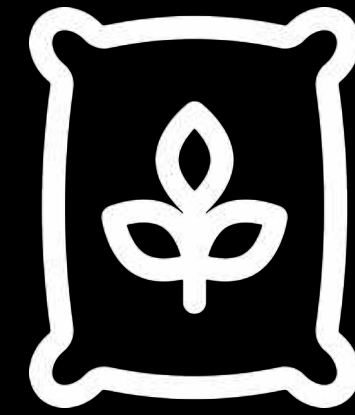
#P3B

THE HUMAN FOOTPRINT

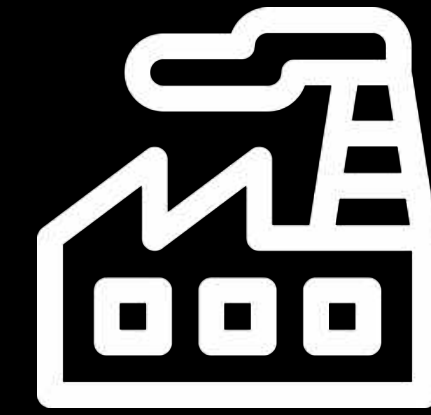
INDUSTRIALIZATION OF THE GLOBAL LANDSCAPE



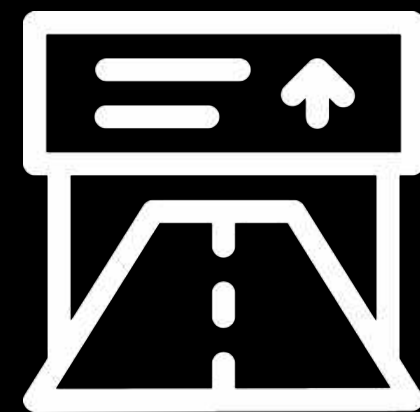
Extraction and
Combustion



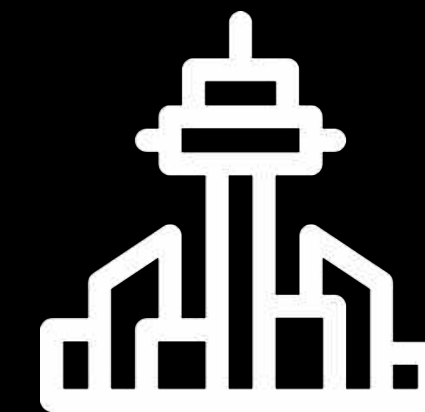
Agriculture



Manufacturing



Infrastructure



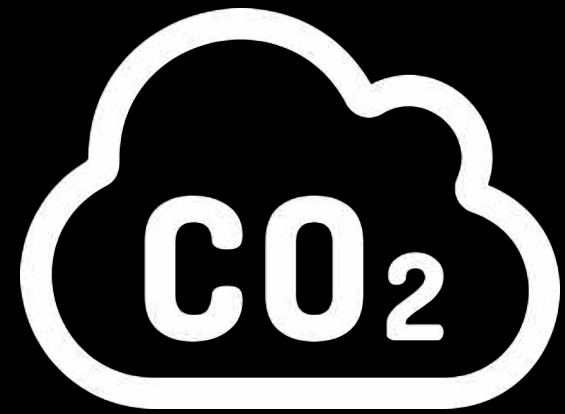
Urbanization

#P3B

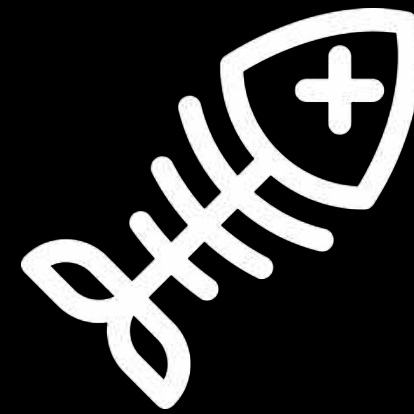


THE HUMAN FOOTPRINT

GEOGRAPHY OF HUMAN WASTE



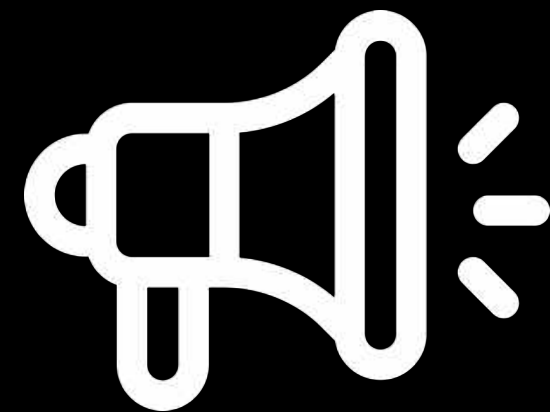
Atmospheric carbon
and our oceans



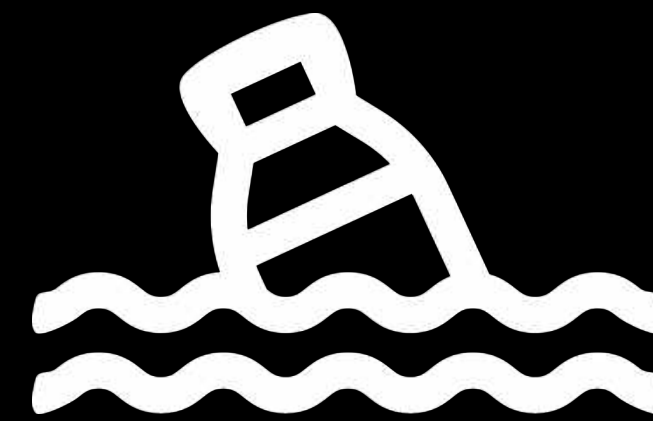
Ocean
dead zones



Persistent
toxicity



Biophonic
disturbance

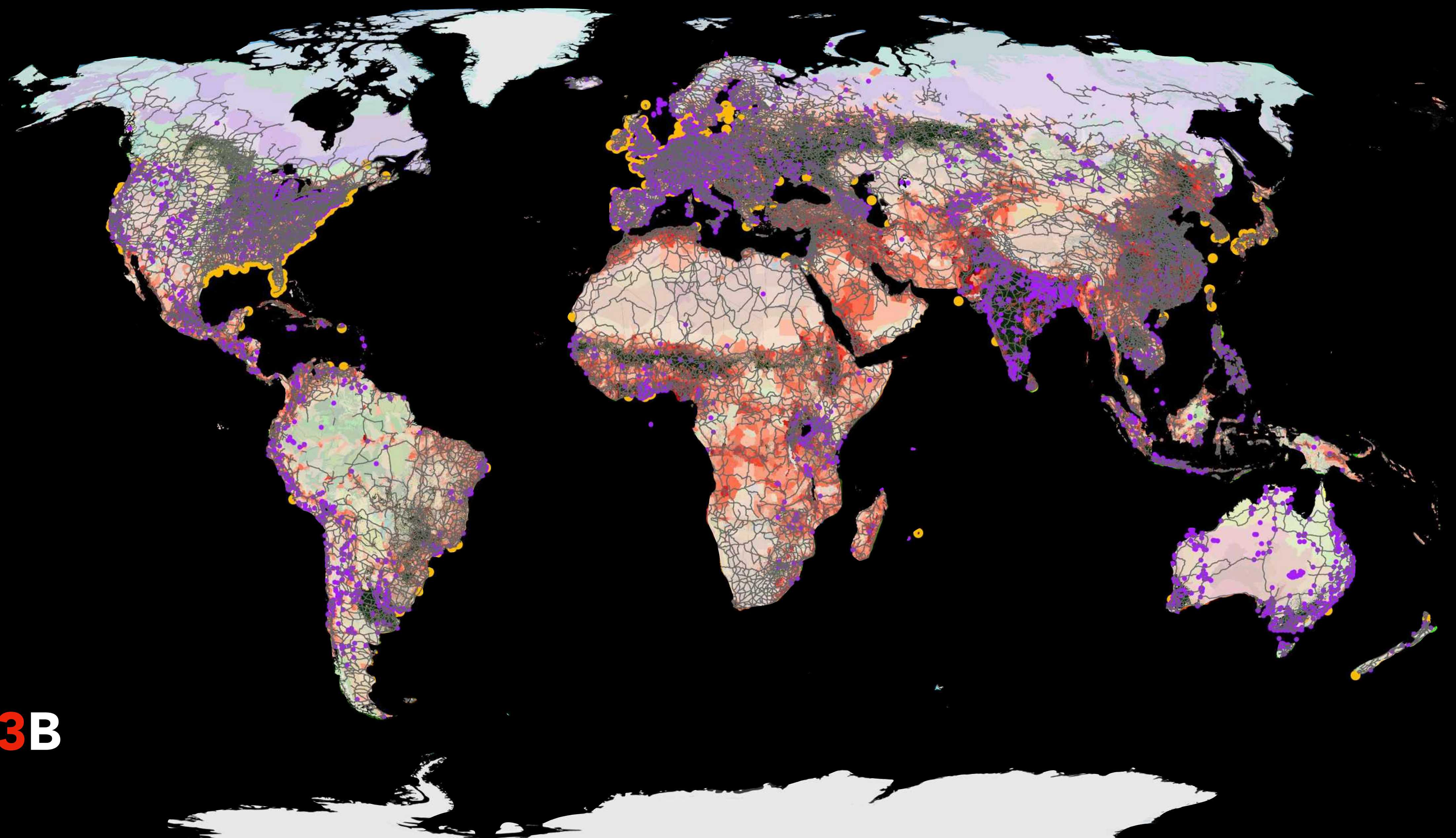


Ocean garbage

#P3B

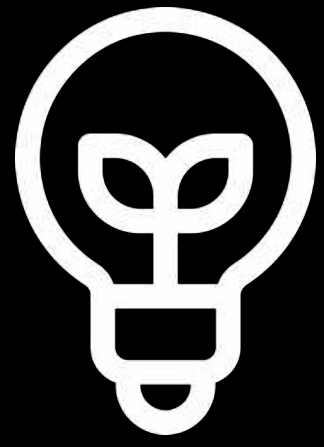


THE HUMAN FOOTPRINT



#P3B

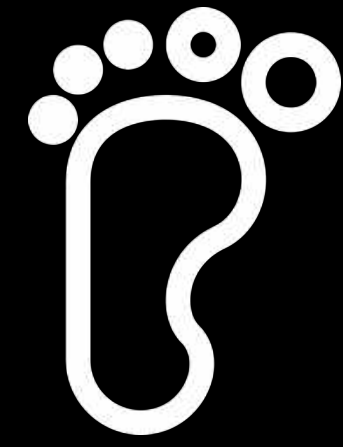
HOW DO YOU CALCULATE THE EARTH'S **MAXIMUM** CARRYING CAPACITY?



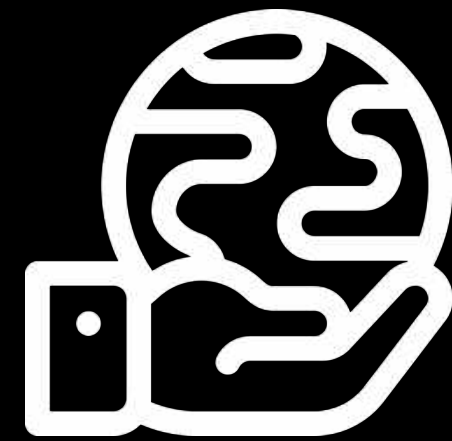
Energy
Thesis



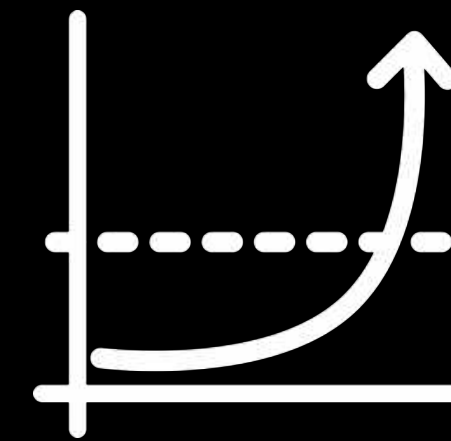
Planetary
Boundary Thesis



Ecological
Footprint
Thesis



Geographically-explicit
Biocapacity Thesis



P3B
Thesis

#P3B





HOW TO BEND THE POPULATION CURVE?

Women's Empowerment

Women's Education

Women's Integration into the Workforce

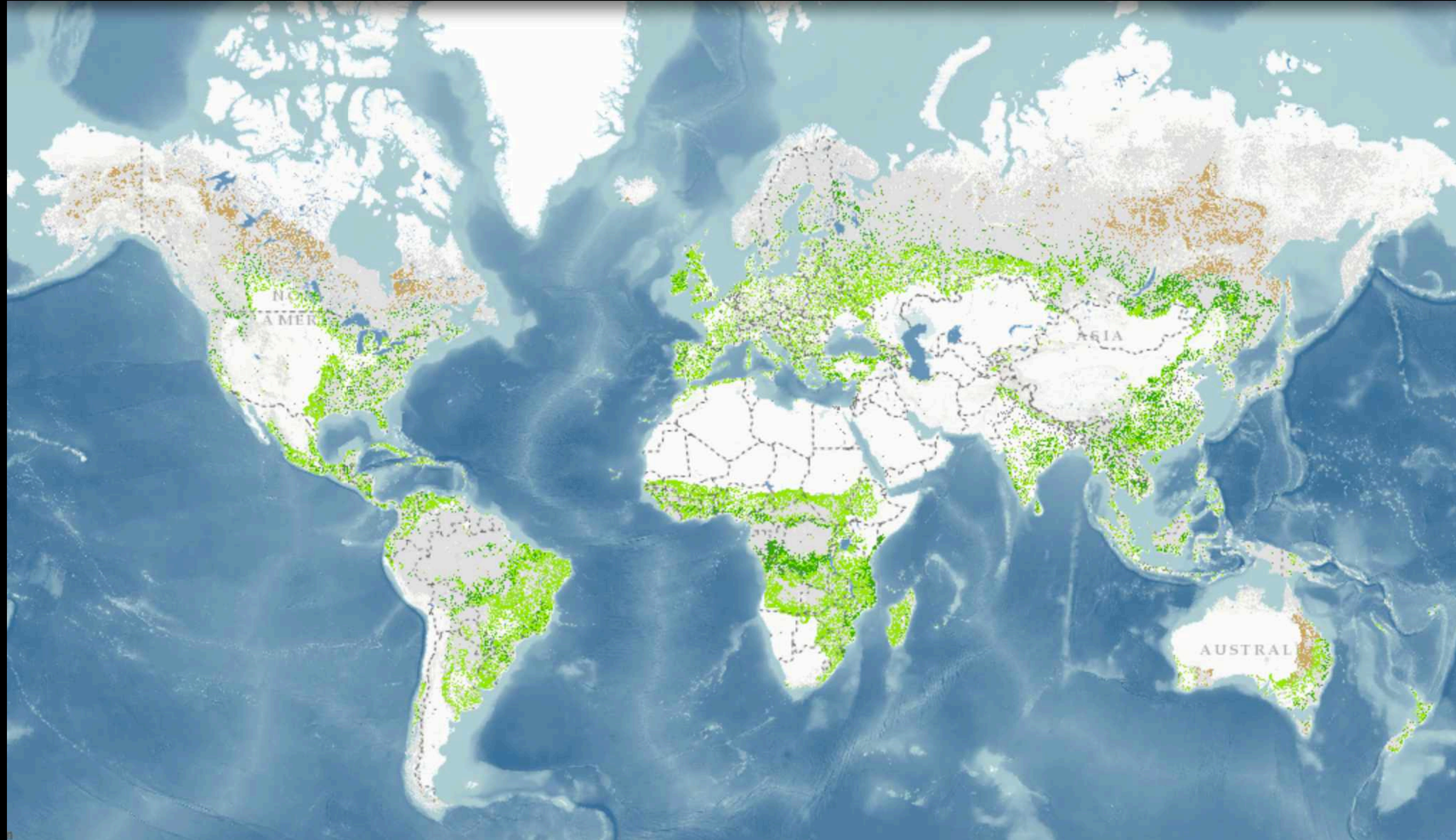
Access to Family Planning Technologies

#P3B

REWILDING & DEINDUSTRIALIZING THE GLOBAL LANDSCAPE

Restoration Opportunity Areas

- Wide-scale restoration
- Mosaic restoration
- Remote restoration



#P3B



UNWINDING THE GLOBAL GEOGRAPHY OF HUMANITY'S WASTE



#P3B

HOW ARE WE SUPPOSED TO FACTOR THIS INTO THE DEVELOPMENT OF US POLICIES AND STRATEGIES?

I&W on Earth's Carrying Capacity
Pay Down Ecological Debt Immediately
Strategies to Empower Women Worldwide
Combat Shifting Baseline

#P3B

I&W ON THE EARTH'S CARRYING CAPACITY

#P3B

**PAY DOWN ECOLOGICAL DEBT
IMMEDIATELY**

#P3B

STRATEGIES TO EMPOWER WOMEN WORLDWIDE

#P3B

**COMBAT THE SHIFTING BASELINE
SYNDROME WITH
SPATIO-TEMPORAL DATA**

#P3B

www.Planet3Billion.com
@Planet3Billion
@PLANETtucker

#P3B

